

Great Place To Work®

How to get onto the Regional & World's Best Workplaces Lists

March 2023





Great Place to Work identifies the best workplaces around the world with the publication of its annual World's Best Workplaces list. The organizations that make this list have a global impact on the quality of employees' lives and communities and are recognized in many countries around the world as the very best in their nation.

Customer Journey

01) Certification



02) National Lists



03) Global Lists



Certification | First Step for All List Consideration

Earn Great Place To Work® Certification™

- 01 Survey your employees
- 02 Complete the Culture Brief™
- 03 Promote and celebrate your Certification

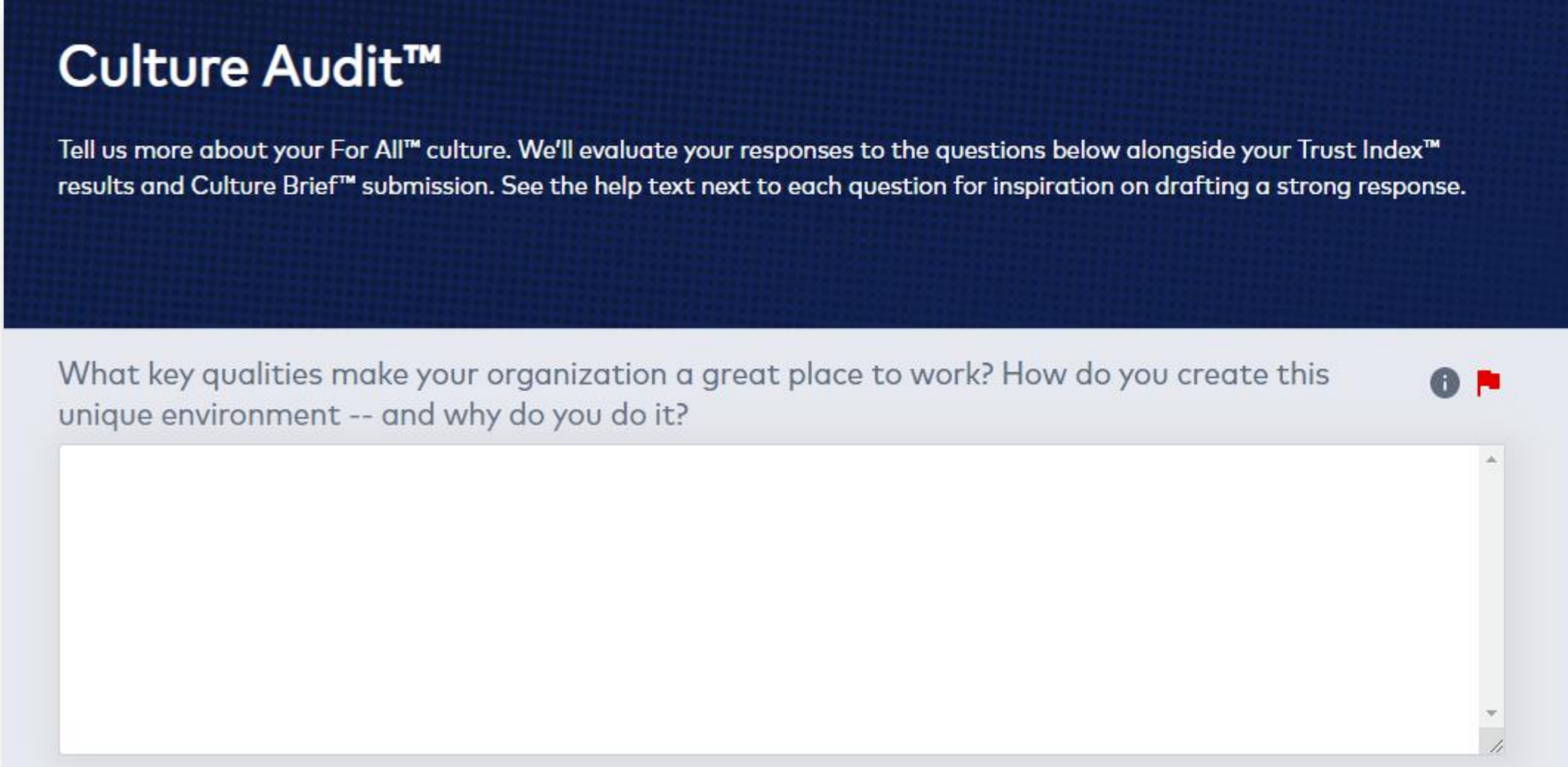


National Lists | Tell us about your company

Complete a Culture Audit™ Submission

- Required for companies that want to be considered for our premier national lists, your answers help us to understand the strategy and programs that are driving your employee experience.
- The Culture Audit contains five required essay questions. Your answers to these questions give you the opportunity to differentiate your company and tell us what makes it unique.

Sample Question



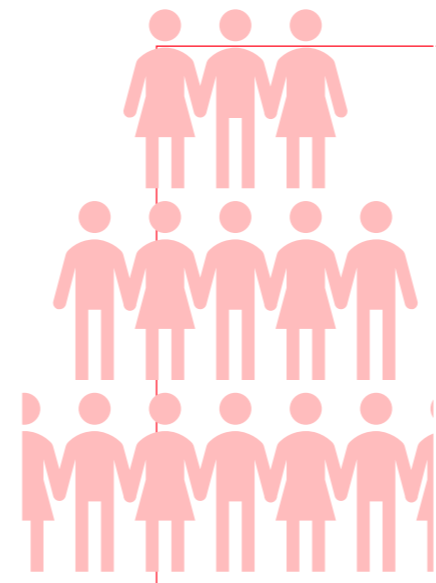
Culture Audit™

Tell us more about your For All™ culture. We'll evaluate your responses to the questions below alongside your Trust Index™ results and Culture Brief™ submission. See the help text next to each question for inspiration on drafting a strong response.

What key qualities make your organization a great place to work? How do you create this unique environment -- and why do you do it?

The screenshot shows a dark blue header with the title 'Culture Audit™' and a paragraph of introductory text. Below this is a light gray question box with the text 'What key qualities make your organization a great place to work? How do you create this unique environment -- and why do you do it?'. To the right of the question is an information icon and a red flag icon. Below the question is a large white text area for the answer, with a scrollbar on the right side.

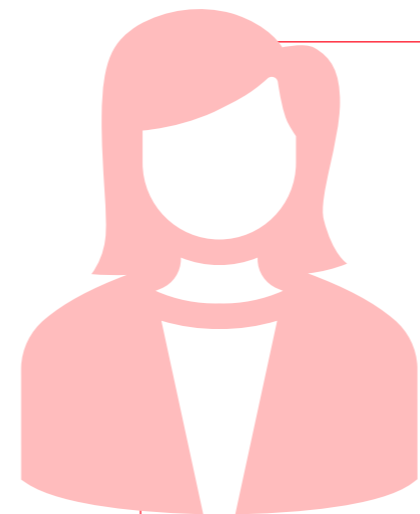
Regional Lists | Eligibility



1,000+ Employees Worldwide

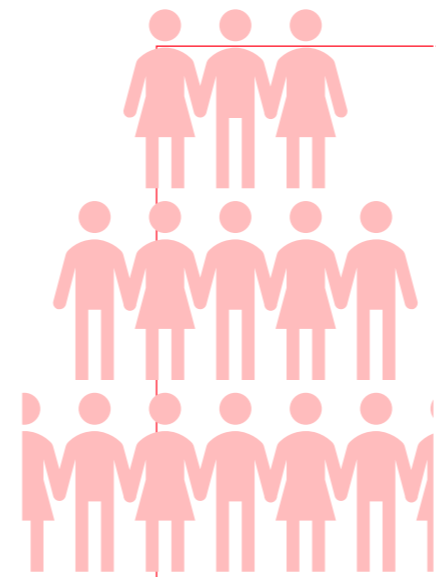


40% or 5,000 employees located outside the HQ Country

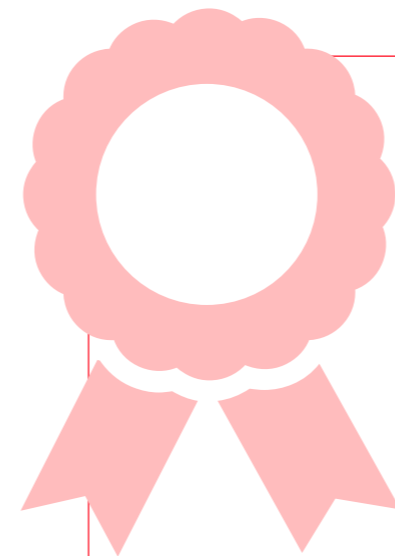


3 Best Workplaces National/Country List Wins in Europe & Latin America and 2 for Asia

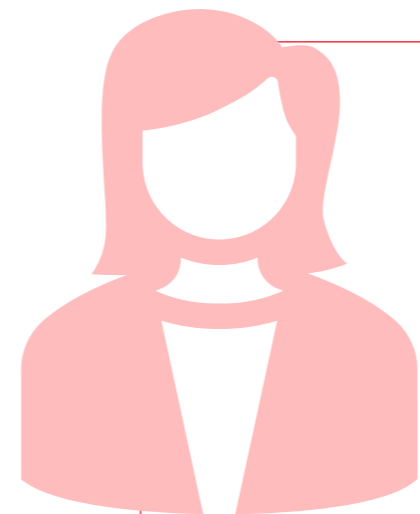
World's Best Workplaces | Eligibility



5,000+ Employees Worldwide



40% or 5,000 employees located outside the HQ Country



5 Best Workplaces National/Country List Wins

Global Lists| Methodology

Consistency

Global Footprint

- The percentage of worldwide employees who have been surveyed.

Excellence

- The number of Great Place To Work® Certified™ countries
- The number of National/Country lists placed on and how highly ranked

To Rank Higher on the World's Best Workplaces List

Global Presence

Did you survey everyone in every country where you have employees with a Certification-eligible survey?

Consistency

Did you achieve Certification in every country where you surveyed?

Excellence

Are you aware of and working on your employee experience to help you achieve higher rankings on national lists?

Thank you!